

*J. McElhinney*  
LICENSEE

*THE*  
**KINGS ARMS**  
**WATERLOO**



25, ROUPELL STREET, SE1 8TB

TEL: 020 7207 0784

EMAIL: [THEKINGSARMS@WINDMILLTAVERNS.COM](mailto:THEKINGSARMS@WINDMILLTAVERNS.COM)

*J. McEhinney*  
LICENSEE  
**THE**  
**KINGS ARMS**  
PUBLIC HOUSE  
& THAI KITCHEN  
Real Ales & Fine Whiskey  
LONDON  
WATERLOO

Nestled along one of London's most historic and charming streets, The Kings Arms is a quintessential South London real ale pub with a character of its own. Just moments from Waterloo, we boast eight real ale pumps and a constantly evolving beer list, all served in our beautifully preserved, architecturally rich surroundings.

Proudly multi-award-winning and celebrated as “Pub of the Year”, The Kings Arms offers tradition at its very best, enhanced by a delicious Thai twist from our ever-popular kitchen.

We also offer two stunning private rooms — perfect for celebrations, gatherings, and meetings, whether by day or night.



## THE ROUPELL SUITE

Perfect for team meetings, private dining, birthdays, receptions, Christmas parties and more.

Seated capacity upto 20 people

Standing room upto 30 people

HD Television with HDMI cable

Range of seating arrangements available

Order drinks directly to the room and avoid waiting at the bar.

Very reasonable private hire rates available from Monday to Sunday from 12pm. Please contact us directly to discuss further details.

All spends are redeemable on drinks only. Food can be purchased separately from Kanchana's Kitchen



## BONSIE'S

Perfect for smaller meetings, private dining,  
intimate gatherings and celebrations.

Seated capacity up to 8 people  
Standing room for up to 15 people

HD Television with HDMI cable  
Range of seating arrangements available

Order drinks directly to the room and avoid waiting  
at the bar.

Very reasonable private hire rates available from  
Monday to Sunday from 12pm. Please contact us  
directly to discuss further details.

All spends are redeemable on drinks only. Food can  
be purchased separately from Kanchana's Kitchen



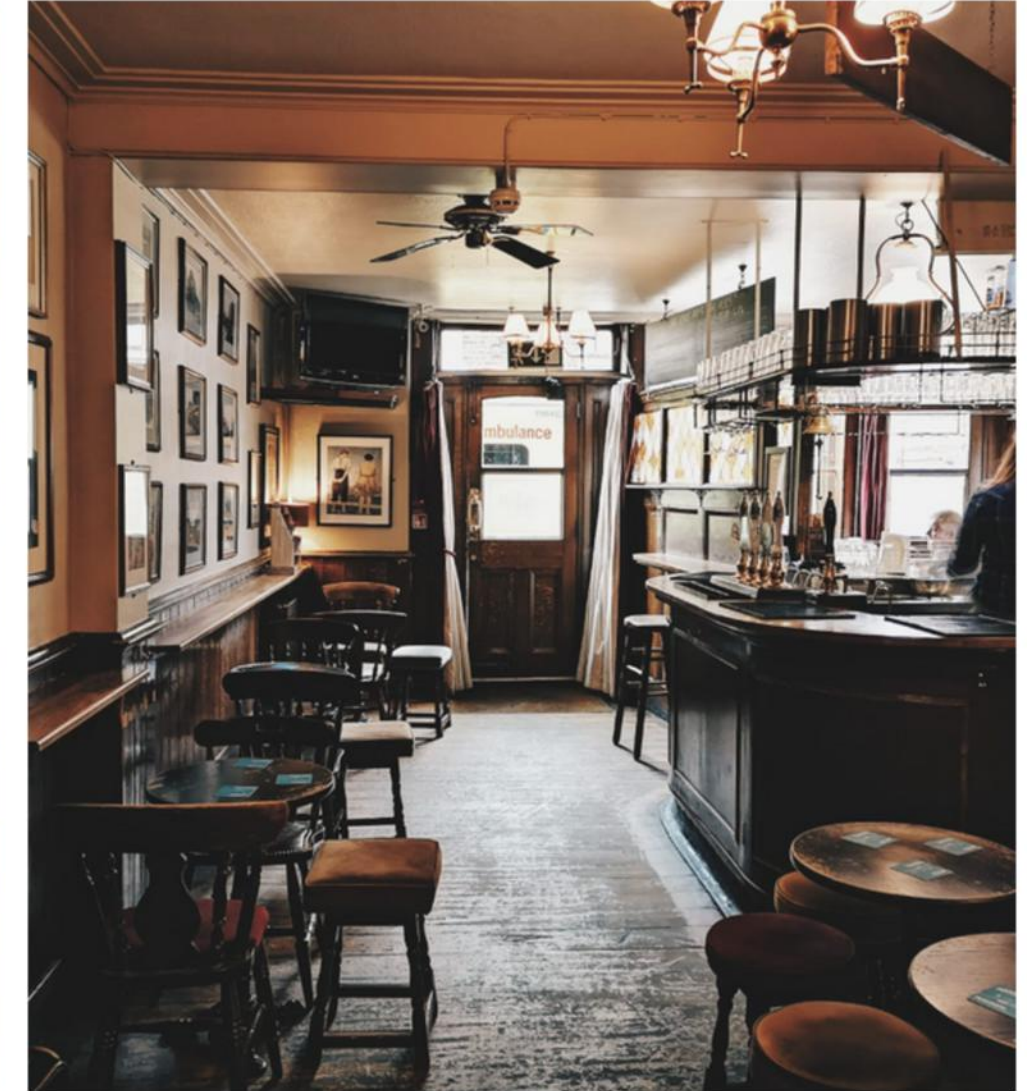
# THE KINGS ARMS WATERLOO

## DRINKS PACKAGES

Prosecco Reception £13  
*includes 2 glasses per person*

3 Bottles of House Wine £80  
*Choose between red, white or rosé*

10 Bottles of Beer £55  
*Choose from Peroni, Corona or Staropramen 0%*



# KANCHANA'S KITCHEN

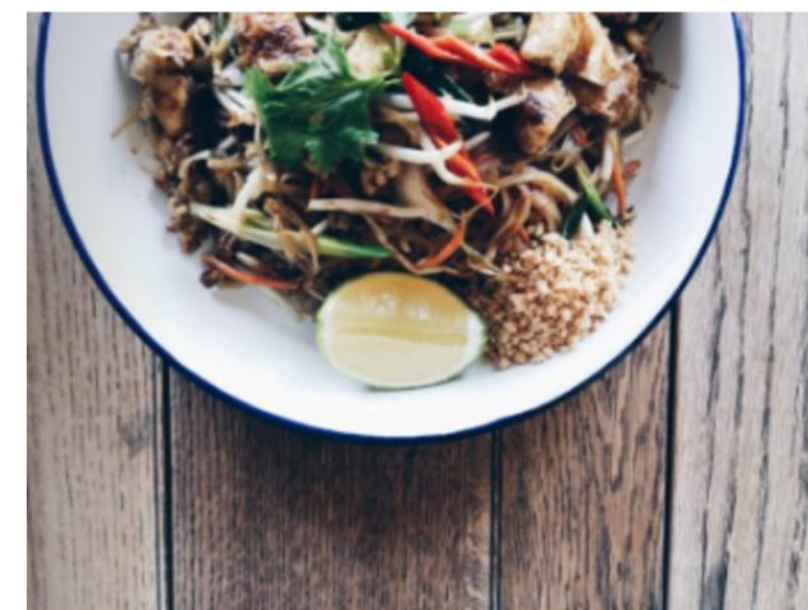
Kanchana's kitchen is a separate business, housed in The Kings Arms, and available to order from on the day of your booking. Alternatively, we can take pre orders, but payment will need to be made on the day of your booking.

Kanchana's Kitchen serves Thai food every day from Monday through to Sunday. Freshly cooked and absolutely delicious. Please request to see the full menu from our team, however their popular Thai mixed platter can be found below. Perfect for group bookings looking for casual catering.

## **Kanchana's Mixed Platter**

*£10.95pp (min. 2ppl)*

Chicken satay, vegetable spring rolls, spicy Thai fish cakes, vegetable tempura with sweet chilli and satay, butterfly prawns & prawn toast.



# THE KINGS ARMS WATERLOO

## BEER TASTING EXPERIENCE

We're really into our real ale here at The Kings Arms. It's a defining feature of our Waterloo pub and we do our best to source our beer from local breweries. It makes perfect sense that an establishment so well known for its beer, would have a manager who has, not only a deep passion for the stuff, but an extensive amount of knowledge and training. That's Chris!

(He's the guy over to the right → )

Chris is our in-house industry expert and qualified cicerone and runs a popular beer masterclass here.

### What's Included:

Learnings on the brewing process and the history of different beer styles.

Tasting of 6 distinct beers, handpicked for a variety of flavours.

£35 per person

Advance booking required, so speak to our team to secure your spot for an unforgettable evening of beer exploration! Perfect for team building and can be amended for customers just entering the world of beer history or those who are well advanced.

